



XXXV Meeting of the Club Jules Gonin  
27-30 May 2026 • Lugano, Switzerland

# PRELIMINARY PROGRAMME





# Welcome to the XXXVth Meeting of the Club Jules Gonin

---

Dear Colleagues,

It is our great pleasure to invite you to Lugano for the XXXVth Meeting of the Club Jules Gonin.

Lugano is easily and comfortably accessible by all means of public and private transport, thanks to its central location and the network of travel connections in Switzerland, and it is thus an excellent location for a meeting of the Club Jules Gonin.

We very much look forward to seeing you in Lugano in May 2026.

**José García Arumí**

*President, Club Jules Gonin*

**Thomas J. Wolfensberger**

*Secretary, Club Jules Gonin*

## Committees

### Executive Committee

#### President

José García-Arumí

#### Secretary

Thomas J. Wolfensberger

#### Members

Nikos Bechrakis

Maria H. Berrocal

Jens Folke Kiilgaard

Joan W. Miller

David H.W. Steel

Hiroko Terasaki

Cynthia A. Toth

### Scientific Programme Committee

#### Chairman

David H.W. Steel

#### Members

José Garcia-Arumi

Maria H. Berrocal

Cynthia A. Toth

Thomas J. Wolfensberger

## Getting to Lugano

### By Air

The nearest international airport is Milan Malpensa, Italy, located approximately 70 km away and accessible from Lugano by regular train services in around 1 hour and 40 minutes. Zurich International Airport is approximately 200 km away and can be reached by frequent train connections in about 2 hours and 40 minutes.

### By Public Transport

The Swiss rail system is efficient and extensive, offering convenient connections to Lugano from across Switzerland and from international destinations. Travel times by train are around 3 hours and 30 minutes from Basel, 2 hours and 15 minutes from Zurich, 5 hours and 15 minutes from Geneva, and 1 hour and 15 minutes from Milan.

### By Car

Lugano is located on the Gotthard international motorway (A2/E35 Zurich–Chiasso–Milan), one of Europe's main north–south transport routes. The city is approximately 270 km from Basel, 210 km from Zurich, 430 km from Geneva, and 80 km from Milan. For regional and national traffic updates, download the App: TCS - Touring Club Suisse.



### Within Lugano

From Lugano SBB railway station, the Convention Centre can be reached by taking TPL bus line 2 towards Castagnola and getting off at the *Palazzo dei Congressi* stop. The bus journey takes around 10 minutes. Another option is to travel by funicular to the city centre and continue on foot,

with a total travel time of around 15 minutes. Situated roughly 500 metres from the city centre, the Convention Centre is also within easy walking distance. Pedestrian routes include Corso Enrico Pestalozzi and Viale Carlo Cattaneo, as well as the lakeside path leading towards Parco Ciani.



## Useful Information

---

### Climate

The climatic conditions in Lugano are characterized by a warm and temperate atmosphere. The temperatures are pleasant and the climate is mild all year round on the shores of Lake Lugano. Temperatures can exceed 20°C in May. The sun shines on the southern side of the Alps (more than 2,000 hours of sunshine per year in Lugano) and fog is a rare phenomenon, which always arouses interest.

### Electricity

The voltage in Switzerland, as in most of Europe, is 230V/50 Hz. Switzerland uses type C (2-pin) and Type J (3-pin) plugs. (Type C 2-pin plugs also fit J sockets.) The standard continental type plug with two round pins, applied for many electrical travel products, may be used without a problem. Some hotels offer the option to borrow power converters, so it's worth checking with your accommodation before you travel.

### Currency

The official currency in Switzerland is Swiss Francs (CHF). All major credit cards, such as Visa, Mastercard, and American Express, are widely accepted in most places throughout Switzerland, including Lugano. Numerous ATMs are available 24 hours a day, accepting both debit and credit cards. While some ATMs may not charge a fee, your bank could impose charges for foreign transactions or using an out-of-network ATM.

### VAT

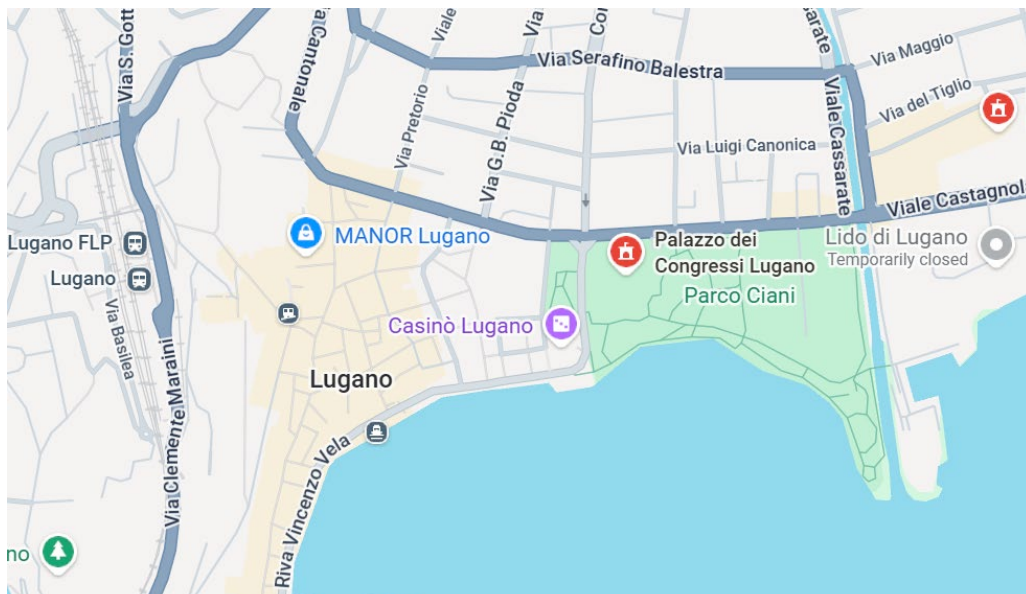
As of January 1, 2024, the standard VAT rate in Switzerland is 8.1%, with a reduced rate of 2.6% for essential goods (food, books, medicine) and a 3.8% rate for accommodation.

### Official languages

Switzerland has four official national languages: German, French, Italian, and Romansh. The official language of Lugano is Italian. As the largest city in the Canton of Ticino and the largest Italian-speaking city outside of Italy, it serves as the cultural and economic hub of Switzerland's Italian-speaking region. While Italian is the primary language, the city is cosmopolitan, with English, German, and French commonly used.

## Venue Information

The XXXV Club Jules Gonin Meeting will be held from Wednesday May 27th to Saturday, May 30th, 2026, at the Palazzo dei Congressi in Lugano, Switzerland.



### Palazzo dei Congressi Lugano

Piazza Indipendenza 4

6901 Lugano, Switzerland

[www.luganoconventions.com](http://www.luganoconventions.com)

# Registration

Registration for the meeting is available through the website [www.cjg2026.com](http://www.cjg2026.com)

## Lugano 2026 Registration Fees

General Registration	Until 10 February 2026	From 11 February 2026
Member	CHF 880	CHF 960
Candidate	CHF 910	CHF 990
Guest Contributor	CHF 910	CHF 990

Excluding 8.1% VAT

Networking Reception – Wednesday, 27 May 2026	CHF 90
Networking Session & Dinner – Thursday, 28 May 2026	CHF 125
Conference Dinner – Friday, 29 May 2026	CHF 145

VAT 8.1% included

### Registration includes:

- Participation in the scientific sessions.
- Conference programme.
- Free internet access.
- Coffee Breaks.
- Lunches on Thursday 28th and Friday 29th May

### Payment method

The payment methods offered is credit card (AMEX, MasterCard or Visa). For each transaction, a 3% non-refundable handling fee will be charged. Registration will only be valid upon receipt of the full payment by the registration department according to the deadline indicated.

### Cancellation policy

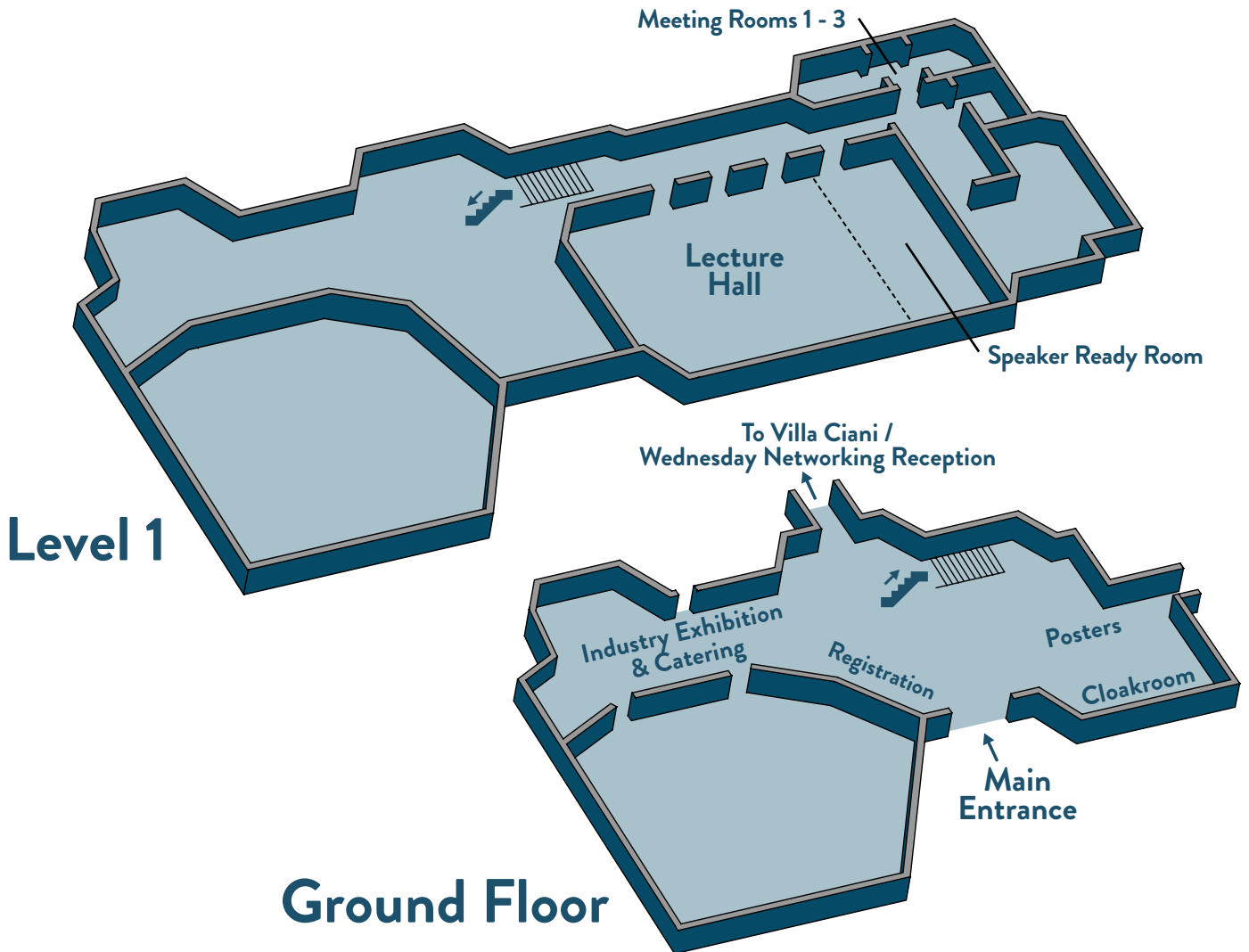
All cancellations must be requested via email to [secretariat.ClubJulesGonin@congrex.com](mailto:secretariat.ClubJulesGonin@congrex.com).

All refunds will be made after the meeting. The following rules shall apply: Registrations cancelled until 27 April 2026 will be refunded minus an administrative fee.

Registrations cancelled from 28 April 2026 onwards will not be eligible for a refund.

## Venue Overview

This year's Meeting in Lugano will be accompanied by an industrial and poster exhibition located on the ground floor, while the lecture hall and speaker ready room are situated on the first floor.



## Opening Times

### Exhibition

Thursday 28 May	08:00 – 15:00
Friday 29 May	08:00 – 18:00
Saturday 30 May	08:00 – 13:00

### Speaker Ready Room

Wednesday 27 May	14:00 – 18:00
Thursday 28 May	07:00 – 15:00
Friday 29 May	07:00 – 17:45
Saturday 30 May	07:30 – 11:45

### Registration Desk

Wednesday 27 May	12:00 – 19:00
Thursday 28 May	07:00 – 16:15
Friday 29 May	07:00 – 16:15
Saturday 30 May	07:30 – 12:00

### Cloakroom

Thursday 28 May	07:00 – 16:15
Friday 29 May	07:00 – 18:15
Saturday 30 May	07:30 – 13:00

# Audiovisual Requirements

---

## Speaker Ready Room

The Speaker Ready Room is located on the first floor behind the Lecture Hall. Please follow the signposts.

The Speaker Ready Room will be managed by M Events Cross Media GmbH. As a presenter, you are requested to upload your presentation to an M Events protected server. This can be done prior to arriving in Lugano or at least 3 hours before your scheduled presentation onsite. Both PC and Apple Macintosh computers will be available for speakers to review their presentations.

Detailed pre-upload instructions will be shared approximately three weeks before the meeting.

All speakers, including those who have pre-submitted their presentations, must visit the Speaker Ready Room at least 3 hours before their presentation. Speakers scheduled for early morning sessions are required to upload their presentation the day before.

Your presentation will then be sent directly to the laptop PC located at the technical table next to the stage. At the lectern, a preview screen and a slide advancer/clicker will be available to control your presentation.

Please note that it will not be possible to upload presentations directly onto the lecture laptop, and connections from personal laptops at the lectern are not permitted. Under no circumstances may personal laptops be used.

## Preparation guidelines

- Presentations must be prepared either in Microsoft-PowerPoint (Windows User), or in Keynote (Mac user), in 16:9 format, landscape orientation. (4:3 presentations will display black bars on the sides).
- Videos can be linked or embedded. Please remember to upload your video files separately if they are linked or if you are using PowerPoint 2007 or older versions, as they cannot be embedded into the presentation.
- Please Note: Links in your presentation to external websites or the use of add-ins are not possible.
- Time-controlled slide changes are automatically deactivated. If you want to keep them, please contact the staff at the Speaker Ready Room on site or the Helpdesk.

## Recommendations

We strongly recommend you to always bring a back-up copy of your presentation on USB memory stick.

# Scientific Information

---

## Time Allocations for Oral Presentations

Please note that the times allocated for the different types of presentations are the following:

- All oral presentations have been scheduled as a 5-minute presentation with 3 minutes of discussion.

## Poster Presentations

Posters should be placed on panels in the exhibition area on Wednesday 27th May. The Poster Sessions with refreshments will be held within the poster area on Thursday 28th May, Friday 29th May and Saturday 30th May.

# Synopsis of the Scientific Programme

WEDNESDAY 27 MAY	THURSDAY 28 MAY	FRIDAY 29 MAY	SATURDAY 30 MAY
	07:00 REGISTRATION OPEN	07:00 REGISTRATION OPEN	
	08:00 OPENING OF MEETING	07:30 - 08:15 GONIN BUSINESS MEETING	07:30 REGISTRATION OPEN
	08:00 - 10:10 SESSION I VITREO-RETINAL SURGERY	08:15 - 10:15 SESSION VI VITREO-RETINAL SURGERY	08:00 - 9:25 SESSION XI DIABETIC RETINOPATHY AND VASCULAR DISEASES
	10:10 - 11:00 SESSION II POSTER SESSION	10:15 - 11:05 AWARD SESSION HERMANN WACKER LECTURE JULES GONIN LECTURE	09:25 - 10:25 AWARD SESSION YASUO TANO LECTURE, MIKE TRESE AWARD, GRAGODAS AWARD
	11:00 - 12.25 SESSION III AGE RELATED MACULAR DEGENERATION	11:05 - 11:30 BREAK	10:25 - 11:25 SESSION XII POSTER SESSION
12:00 REGISTRATION OPEN		11:30 - 13:00 SESSION VII INNOVATION/TADAYONI SESSION	11:25 - 12:30 SESSION XIII INFLAMMATION ENDOPHTHALMITIS
	12:25 - 13:15 LUNCH	13:00 - 13:45 LUNCH	12:30 ADJOURN END OF MEETING
	13:15 - 14:30 SESSION IV RETINAL IMAGING	13:45 - 15:10 SESSION VIII PEDIATRIC RETINA AND DYSTROPHIES	
	14:30 - 15:30 SESSION V TUMORS	15:10 - 16:10 SESSION IX POSTER SESSION	
		16:10 - 17:35 SESSION X VITREO-RETINAL SURGERY	
16:00 - 18:30 GONIN CASE CONFERENCE	16:00 NETWORKING DINNER		
19:00 - 21:00 NETWORKING RECEPTION		18:20 CONFERENCE DINNER	

# Preliminary Scientific Programme

---

## Wednesday, 27 May 2026

16:00-18:00

### GONIN CASE CONFERENCE

Presenters: T. Alasil, F. Arevalo, R. Ehrlich, L. Ferro Desideri, A. Fung, T. Garcin, M. Inoue, M. Johnson, K. Kim, T.H. Mahmoud, A. Mavi Yildiz, S. Michels, W.F. Mieler, N.A. Patel, E. Philippakis, L. Sandri, A. Thanos, C. Toth, M. Ulbig, L. Wu, W.C. Wu

19:00-21:00

### NETWORKING RECEPTION

---

## Thursday, 28 May 2026

08:00

### OPENING OF MEETING

08:00-09:40

### SESSION I

#### VITREO-RETINAL SURGERY

- 1 MAPPING THE PROLIFERATIVE VITREORETINOPATHY CYCLE: EVENT TIMING, RISK, AND EARLY MARKERS OF FAILURE  
R. Anguita, L. Ferro Desideri, C. Troyas, P. Banerjee, M. Zinkernagel, D.G. Charteris
- 2 MACULAR OEDEMA IN PROLIFERATIVE VITREORETINOPATHY: CAUSAL FACTORS, PROGNOSIS AND TREATMENT  
D.G. Charteris, R. Anguita, L. Ferro Desideri, P.Y. Sim, A. Makuloluwa, P. Banerjee, M. Zinkernagel
- 3 THE PROTEOMICS OF RECURRENT RETINAL DETACHMENT  
T. Rossi, G. Ripandelli, G. Zingale, D. Sbardella, S. Giammaria, M. Stirpe
- 4 METHOTREXATE FOR EARLY PROLIFERATIVE VITREORETINOPATHY  
T. Papakostas, P. Bomdica, K. Blinder
- 5 OUTCOMES OF COMPLEX PVR RETINAL DETACHMENT REPAIR WITH AND WITHOUT INTRAVITREAL METHOTREXATE AT A SINGLE TERTIARY CARE CENTER  
I. Ploumi, M.D. Garcia, Y. Zhu, K.N. Nodecker, S.H. Shah, W. Xu, J.B. Miller
- 6 SERIAL SMALL CIRCULAR RELAXING RETINOTOMIES FOR THE MANAGEMENT OF INTRINSIC RETINAL FORESHORTENING IN EYES WITH COMPLEX RETINAL DETACHMENT AND PROLIFERATIVE VITREORETINOPATHY  
T.S. Hassan, O.T. Hassan, M. Runner, O.M. Moinuddin
- 7 RELAXING RETINECTOMY AND AUTOLOGOUS RETINAL TRANSPLANT FOR COMPLEX RETINAL DETACHMENT WITH MACULAR HOLE  
T. Alasil
- 8 COMPARABLE OR IMPROVED OUTCOMES WITH C2F6 VERSUS C3F8 AND SF6 IN PRIMARY RETINAL DETACHMENT: A MULTICENTRE PROPENSITY-MATCHED STUDY  
D. Steel, N. Tzoumas, X.S. Li, D. Yorston, T. Williamson, A. Laidlaw on behalf of the BEAVRS and EURETINA VR Retinal Detachment Outcomes Group
- 9 VITRECTOMY FOR RETINAL DETACHMENT WITH AND WITHOUT PFCL: A COMPARATIVE CLINICAL STUDY  
R. Liegl, C. Liegl, I. Staudt, F.G. Holz
- 10 THE EFFECT OF DURATION OF MACULAR DETACHMENT ON VISUAL PROGNOSIS IN MACULA-OFF RETINAL DETACHMENT REPAIR – A REGISTRY ANALYSIS OF 2486 PATIENTS  
A.T. Fung, E.L. Ong, M.A. Honardoost, Z. Jin, P. Chopra, F.K. Chen, W.O. Chan, P.J. Allen, R.W. Essex
- 11 TRANSCONJUNCTIVAL SUPRACHOROIDAL BUCKLING FOR RHEGMATOGENOUS RETINAL DETACHMENT. FROM SIMPLE TO ADVANCED  
E.N. EL Rayes, S. Gotzaridis
- 12 IN VIVO EVALUATION OF SUPRACHOROIDAL INJECTION VOLUME AND INTRAOCULAR PRESSURE DYNAMICS USING A NOVEL SUPRACHOROIDAL DRUG DELIVERY PLATFORM  
R. Muni, R. Shor, E. Rutherford, G. Noronha, I.M. Melo
- 13 MORPHOLOGICAL CHARACTERISTICS OF RETINAL REATTACHMENT FOLLOWING SCLERAL BUCKLING IN FOVEA-INVOLVING RHEGMATOGENOUS RETINAL DETACHMENT  
R.J. Hillier

# Preliminary Scientific Programme

---

- 14 INCIDENCE OF RETINAL DISPLACEMENT FOLLOWING VITRECTOMY WITH GAS TAMPONADE AND IMMEDIATE ONE-HOUR ONLY FACE-DOWN POSTURING IN MACULA-OFF RHEGMATOGENOUS RETINAL DETACHMENT  
A. Laidlaw, M. Elsayyed, P.Y. Sim, S. Sen, L. Michaels, T. Williamson
- 15 VOLUMETRIC MAPPING OF CHOROIDAL LAYER REMODELING AFTER RHEGMATOGENOUS RETINAL DETACHMENT REPAIR  
J. Potic, C. Bergin, V. Amiot, T. Stappler, L. Konstantindis, T.J. Wolfensberger
- 16 HIGH RISK OF PROLIFERATIVE VITREORETINOPATHY IN RETINAL DETACHMENTS OF VON HIPPEL-LINDAU PATIENTS: A STUDY OF A LARGE U.S. TERTIARY COHORT  
D.G. Vavvas, K.G. Baroutis, G. Sakuno, S. Hoyek, N.A. Patel, J.W. Miller
- 10:10-11:00  
**SESSION II**  
**POSTER SESSION**  
**Age Related Macular Degeneration**
- P1 ASSOCIATION OF HUMAN PLASMA METABOLOMICS WITH CONTRAST SENSITIVITY IN AGE-RELATED MACULAR DEGENERATION  
C.C. Awh, L. Krupp, K. Mendez, F. Romano, H. Kang, I. Ploumi, A. Bannerman, G. Baldwin, F. Vingopoulos, R. Bhat, K. Sourirajan, Y. Zhu, I. Lains, J.W. Miller, D.G. Vavvas, J. Lasky-Su, D. Husain, J.B. Miller
- P2 TIESPECTUS (MK-8748) FOR THE TREATMENT OF NEOVASCULAR AGE-RELATED MACULAR DEGENERATION (NVAMD): RESULTS FROM THE FIRST-IN-HUMAN PHASE 1/2A RIOJA CLINICAL STUDY  
D.M. Brown
- P3 EARLIER TREATMENT YIELDS BETTER OUTCOMES: 5 YEARS OF PEGCETACOPLAN TREATMENT FOR GEOGRAPHIC ATROPHY SECONDARY TO AMD  
C.K. Chan, D.S. Dhoot, S. Garg, D. Lally, A. Hu, L. Biccias, N. Eter, J. Arnold, A. Chang, C. Li, F. Yemanyi, M. Friedman, C.R. Baumal, C.C. Wykoff
- P4 INCORPORATION OF HOME-OCT IN THE MANAGEMENT OF NEOVASCULAR AMD PATIENTS  
O. Gal-Or, M. Krubiner, S. Soudri, A. Tiosano, I. Rosenblat, R. Siegel, K. Mimouni, R. Ehrlich, A. Meshi, A. Dotan
- P5 HUMAN DONOR RETINAL AND CHOROIDAL TISSUE METABOLOMIC PROFILING IN AGE-RELATED MACULAR DEGENERATION  
D. Husain, I. Lains, K. Mendez, R. Bhat, H. Kang, K. Sourirajan, D.M. Wu, I.K. Kim, J.B. Miller, D.G. Vavvas, J. Lasky-Su, J.W. Miller
- P6 NLRP3 INFLAMMASOME SUPPRESSION RESCUES LIPOFUSCIN-MEDIATED RETINAL DEGENERATION IN VIVO  
C. Peters, M. Tabel, A. Wolf, T. Langmann, T.U. Krohne
- P7 A NEW VITRECTOMY-SPARING APPROACH FOR SUBMACULAR HEMORRHAGE USING SUBRETINAL RT-PA INJECTION: A ONE-DAY PROCEDURE  
L.M. Lytvynchuk, E.C. Reyna
- P8 YELLOW DOTS AT THE MACULA ALWAYS HARMFUL?  
M. Maier, K. Deichl, P.C. Issa
- P9 EVALUATION OF THE EFFICACY AND SAFETY OF PHOTOBIO-MODULATION THERAPY USING MULTIMODAL IMAGING: SINGLE-CENTER 12-MONTH RESULTS  
A. Mavi Yildiz, S. Yilmaz, E. Avci, I. Önal Avci, R. Avci
- P10 QUALITY AND CONSISTENCY OF INTRAVITREAL INJECTION TECHNIQUE REPORTING IN MULTICENTER CLINICAL TRIALS: A SYSTEMATIC META-EPIDEMIOLOGICAL REVIEW AND AN EXPERT PANEL RECOMMENDATION  
G.B. Melo, T.G.C. Vasconcelos, V.P.V. Mendonça, T.N.O. Rassi, M.L. dos Santos, C.V.S. Regatieri, M. Maia, M.A. Singer, C.J. Danzig, A. Khanani, G.G. Emerson, R. Singh, C. Meyer, Ø.K. Jørstad
- P11 AUTONOMOUS ROBOTIC SYSTEM FOR SAFE, PRECISE, AND SCALABLE INTRAVITREAL INJECTIONS  
S. Michels, C. Ehmke, J. Zughaibi, B. Günther, M. Becker, B. Nelson

# Preliminary Scientific Programme

---

P12 ASSESSMENT OF THE CORRELATION BETWEEN STRUCTURAL CHANGES AND VISION LOSS IN PATIENTS WITH GEOGRAPHIC ATROPHY

D.R. Muth, H. Häbel, A.P. Venkataraman, A. Dominguez-Vicent, L. Quérat, G. Petrovski, P.A. Williams, F. Locri, S.A. Zweifel, Y. Qu, A. Makady, A. Ogundele, Q. Zhang, A. Kvanta

P13 THE ROLE OF GLP1 RECEPTOR AGONISTS IN NON-EXUDATIVE AND EXUDATIVE AGE-RELATED MACULAR DEGENERATION

A.V. Rachitskaya, K.C. Allan, S.B. Kim, D.C. Kaelber, R.P. Singh, K.E. Talcott

P14 FUNCTIONAL AND ANATOMICAL CHANGES AFTER 24MOS FOLLOWING OPHTHALMIC ARTERY ANGIOPLASTY FOR GEOGRAPHIC ATROPHY SECONDARY TO AGE-RELATED MACULAR DEGENERATION (GA-AMD)

M.J. Saravia, J. Rojas, N. Monteros, M.P. Usuna, J. Fellingner

P15 TARGETED MICROPERIMETRY IN EARLY ATROPHIC LESIONS IN AGE-RELATED MACULAR DEGENERATION

S. Schmitz-Valckenberg, S. Lee, K. Daynes, R. Nelson, M. Fleckenstein

P16 EPIGENETIC AGE IN PATIENTS WITH AGE RELATED MACULAR DEGENERATION

S. Sharma, P. Wang, E. Sharma, J. Rullo, W. Hopkins, D. Ramesh

P17 IMPACT OF STATIN INTENSITY ON DISEASE PROGRESSION AND STRUCTURAL AND FUNCTIONAL OUTCOMES IN INTERMEDIATE AGE-RELATED MACULAR DEGENERATION

R. Woodward, J. Zhang, F. Romano, I. Ploumi, K.N. Nodecker, I.M. Stettler, S.S. Gumustop, X. Ding, D. Ntentakis, C. Bennett, K.M. Overbey, C. Chen, Y. Zhu, F. Vingopoulos, R. Marrero-Alattar, W. Xu, I. Lains, D. Husain, D.G. Vavvas, J.W. Miller, J.B. Miller

P18 RETINAL SENSITIVITY BY OUTER RETINAL STATUS IN DRY AGE-RELATED MACULAR DEGENERATION

S.Y. Yu, S. Lee, K. Kim

P19 REAL-WORLD DATA WITH AFLIBERCEPT 8MG IN NEOVASCULAR AMD AND DIABETIC MACULAR EDEMA: INSIGHTS FROM THE BERLIN MACULA REGISTRY

O. Zeitz, S. Ashraf-Vaghefi, J. Buck, I. Alruwaili, A. RübSam, V.A. Knecht, F. Rosanski, L. zur Bonsen, A.M. Joussea

11:00-12:25

## SESSION III

### AGE RELATED MACULAR DEGENERATION

17 OCCURRENCE AND RISK FACTORS OF MACULAR ATROPHY IN NEOVASCULAR AGE-RELATED MACULAR DEGENERATION ACCORDING TO NEOVASCULARIZATION SUBTYPES

L. Kodjikian, A. Moulin, G. Zeender, P. Rizzuto, P. Gascon, K. Allaix, A. Feldman, F. De Bats, B. Wolff, P. Pradat, T. Mathis

18 DISTINCT INTERACTIONS BETWEEN MACULAR NEOVASCULARIZATION AND GEOGRAPHIC ATROPHY: GROWTH DYNAMICS AND FELLOW-EYE RISK

J. Chhablani, E. Sadeghi, G. Gregori, J. DeCicco, Z. Sadeghi, P. Gandhi, S.C. Bollepalli, K.K. Vupparaboina, J.A. Sahel, A.W. Eller

19 IMPACT OF RETICULAR PSEUDODRUSEN ON CLINICAL AND OCULAR CHARACTERISTICS AND PROGRESSION RATE OF GEOGRAPHIC ATROPHY IN JAPANESE PATIENTS

A. Tsujikawa, Y. Ueda-Arakawa

20 MULTIMODAL IMAGING DETERMINANTS OF CONTRAST SENSITIVITY REDUCTION IN GEOGRAPHIC ATROPHY

J.W. Miller, F. Romano, I. Stettler, M. Finn, F. Vingopoulos, X. Ding, K. Overbey, T. Cort, C. Chen, I. Ploumi, G. Baldwin, Y. Shu, K. Nodecker, S. Gumustop, S. Shah, I. Lains, L.A. Kim, D.G. Vavvas, D. Husain, J.B. Miller

21 HUMAN FECAL MICROBIAL AND GUT DERIVED METABOLOMIC PROFILES CORRELATE WITH AMD STAGE

D. Skondra

22 ROBUST VISION GAIN AND ANATOMIC IMPROVEMENT WITH FARICIMAB IN PATIENTS WITH POLYPOIDAL CHOROIDAL VASCULOPATHY: WEEK 48 RESULTS FROM SALWEEN

C.S. Tan, G. Cheung, S.J. Chen, T. Iida, A.H.C. Koh, J. Lee, W.K. Lee, X. Li, P. Ruamviboonsuk, X. Sun, Y. Yanagi, R. Bai, A.N. Duc, P. Margaron, T.Y.Y. Lai

23 HOME OCT AND ARTIFICIAL INTELLIGENCE IN NEOVASCULAR AGE RELATED MACULAR DEGENERATION

A. Loewenstein

# Preliminary Scientific Programme

---

24 IS THE CHOROID INVOLVED IN THE DEVELOPMENT OF AMD?  
D. Pauleikhoff, B. Vahldiek, A. Vahldiek, M. Swora, L. Heine, J. Kleesiek

25 THE OREGIS REGISTRY: EVALUATION OF INTRAVITREAL INJECTIONS FOR NAMD BASED ON REAL-WORLD DATA  
N. Eter, J. Zimmermann, C. Dicke

26 PROPOSED TREATMENT ALGORITHM FOR PERIPHERAL EXUDATIVE HEMORRHAGIC CHORIORETINOPATHY: A SERIES OF 100 EYES  
D. Shroff, M. Sharma, R. Pyare

12:25-13:15

## LUNCH

13:15-14:30

## SESSION IV

### RETINAL IMAGING

27 CLINICAL ASSESSMENT VS ALGORITHMIC PRECISION: UNDERSTANDING OCT BIOMARKER INTERPRETATION  
M.R. Munk, A. Tillmann, R. Stillenmunkes, R. Rückert, C. Fortunato, S. De Zanet, C. Ciller, S. Apostolopoulos

28 REAL-WORLD OUTCOMES OF AFLIBERCEPT 8 MG IN NEOVASCULAR AMD: AI-BASED OCT ANALYSIS IN TREATMENT-NAÏVE AND SWITCHER EYES  
S.A. Zweifel, F. Gabathuler, A. Ambresin, M. Menghini, C. Eandi, J. Garweg, M. Cozzi

29 OCT-ANGIOGRAPHY IDENTIFIES RETINAL MICROVASCULAR BIOMARKERS IN FAMILIAL HYPERCHOLESTEROLEMIA AND A POTENTIAL PATHOPHYSIOLOGICAL MODEL FOR THE DISEASE-RELATED RETINOPATHY  
F.M. Damico, R.D. dos Santos Filho, R.M. Kulchetscki, J.M. Kato, M.H. Miname, V.Z.R. Giraldez, C.G. Machado, G. Sakuno

30 HYPER-REFLECTIVE DOTS (HRD'S) PREDICTING PROLIFERATIVE VITREORETINOPATHY (PVR)  
C. Flaxel, A. Khan, Y. Fan, A. Hanif, Y. Jia

31 THE ORGANIZATION OF HUMAN CHOROIDAL ARTERIES  
M. Paques, A. Barre, C. LeGall, C. Chaumette, M. Atlan, S. Mrejen

32 PILOT STUDY OF CHOROIDAL SYNPHLEBIA  
R.F. Spaide

33 SCLERAL BIREFRINGENCE IN CENTRAL SEROUS CHORIORETINOPATHY BY POLARIZATION-SENSITIVE OPTICAL COHERENCE TOMOGRAPHY  
H. Koizumi

34 CORRELATIONS BETWEEN RETINAL SENSITIVITY AND STRUCTURAL CHANGES ON OPTICAL COHERENCE TOMOGRAPHY IN HYDROXYCHLOROQUINE MACULOPATHY  
Y.T. Hsieh

35 WHEN DO DOMAIN-SPECIFIC FOUNDATION MODELS JUSTIFY THEIR COST? A SYSTEMATIC EVALUATION ACROSS RETINAL IMAGING TASKS  
M.D. Becker, D. Isztl, T. Spitznagel, R. Santos, G.M. Somfai

14:30-15:30

## SESSION V

### TUMORS

36 AGE DISTRIBUTION AND CHARACTERISTICS OF CHOROIDAL NEVI IN 35,559 INDIVIDUALS: A NATIONWIDE STUDY USING OPTOMETRY FUNDUS PHOTOGRAPHY  
J.F. Kiilgaard, H. Quhill, D. Muttuvelu, C. Faber

37 DIFFERENTIATING UVEAL MELANOMA AND NAEVI USING DEEP LEARNING MODELS  
R.N. Hussain, M. Jackson, A. Eleuteri, H. Heimann, H. Kalirai, S.E. Coupland

38 GENE EXPRESSION PROFILING ACCURATELY PREDICTS MORTALITY FOR MEDIUM AND LARGE UVEAL MELANOMA: BUT WHY ARE RESULTS CHANGING  
T.G. Murray, A. Latiff, A. Gold

39 ENDORESECTION OF LARGE UVEAL MELANOMA AFTER PREOPERATIVE NEOADJUVANT RADIOTHERAPY. FUNCTIONAL RESULTS AND COMPLICATIONS  
N.E. Bechrakis, M. Müller, L. Jabbarli, N. Bornfeld, M. Stuschke, M. Guberina, T. Tsimpaki, M. Fiorentzis, P. Rating, M. Lever

# Preliminary Scientific Programme

---

- 40 LOCAL TUMOR CONTROL AND COMPLICATIONS OF RUTHENIUM-106 BRACHYTHERAPY VERSUS FRACTIONATED STEREOTACTIC RADIOTHERAPY FOR UVEAL MELANOMA: A COMPARATIVE TWO-CENTER STUDY  
E. Kiliç, M. Wu, K. Rosenkrands, S. Yavuziyigitoglu, K. Nissen, C.M. van Rij, N.C. Naus, J. Kiilgaard
- 41 REIRRADIATION OF RECURRENT UVEAL MELANOMA FOLLOWING PRIOR PROTON THERAPY: CLINICAL EFFICACY AND TOXICITY OUTCOMES  
A. Schalenbourg, C. Schweizer, D.C. Weber, L. Zografos, A. Pica
- 42 DETECTION OF VITREORETINAL LYMPHOMA AND HIGHER DISEASE BURDEN WITHIN CELL-FREE COMPONENT OF OCULAR SPECIMENS BASED ON MYD88 L265P ANALYSIS  
R.C. Rao, J.M. Szczepanski, B.L. Betz, N.A. Brown

16:00

## NETWORKING SESSION

### NETWORKING DINNER

---

## Friday, 29 May 2026

07:30-08:15

### GONIN BUSINESS MEETING

08:15-10:15

## SESSION VI

### VITREO-RETINAL SURGERY

- 43 COMPARATIVE EVALUATION OF LOW CONCENTRATIONS OF C3F8 IN LARGE MACULAR HOLES: EFFICACY, OUTCOMES, AND ENVIRONMENTAL IMPACT  
V. Dave, P. Chheda, R. Narula
- 44 IMMEDIATE MACULAR HOLE CLOSURE AFTER VITRECTOMY WITH AUTOLOGOUS ILM PLUG AND HEAVY SILICONE OIL TAMPONADE: A SURGICAL CASE SERIES  
L. Konstantinidis, E. Riotto, V. Batis, E. Tobler, T. Stappler, J. Potic, T.J. Wolfensberger

- 45 RATE AND RATIONALE FOR VITRECTOMY AFTER PNEUMATIC RETINOPEXY  
B.T. Smith, M.Z. Siddiqui, G. Vangipuram, C. Li, X. Peng, F. Lum
- 46 SURGICAL APPROACHES TO LARGE HIGH MYOPIC MACULAR HOLES: A GLOBAL MACULAR HOLE MULTICENTER STUDY  
T.H. Mahmoud on behalf of the Macular Hole Global Study Group
- 47 NEW INSIGHTS FROM MFERG TO OBJECTIVELY QUANTIFY FUNCTIONAL RECOVERY AFTER MACULAR HOLE SURGERY OVER 3 YEARS  
T. Garcin, N. Abihaidar, H. Fadli, M. Kaspi, V. Borderie, N. Bouheraoua
- 48 MACULAR HOLES AND ENDOGENOUS ELECTRIC FIELDS: A THEORETICAL MODEL OF HOW ELECTROTAXIS IN RETINAL GLIAL CELLS AIDS IN MACULAR HOLE CLOSURE  
A. Thanos
- 49 LONG-TERM OUTCOMES OF EPIRETINAL LYOPHILIZED AMNIOTIC MEMBRANE GRAFTING FOR PERSISTENT MACULAR HOLES: A BICENTRIC STUDY  
P. Szurman, L. La Franca, E. Bali, C.N. Rudolph
- 50 EXTERNAL FACTORS RELATED TO SURGICAL DEXTERITY: PRINCIPLES FOR IMPROVING SKILLS IN VITREORETINAL SURGERY  
M. Maia, M. Roizenblat, R. Belfot Jr, M.E. Farah, P.L. Gehlbach
- 51 ILM FLAPS IMPROVE CLOSURE AND VISION IN MACULAR HOLE SURGERY: AN INDIVIDUAL PARTICIPANT META-ANALYSIS OF RANDOMISED TRIALS  
N. Tzoumas, T.W. McNally, B.L. Teh, M. Zaman, D. Yorston, N. Lois, V. Chaudhary, D.H. Steel, on behalf of the ILM Flap Study Group
- 52 FUNCTIONAL AND ANATOMICAL OUTCOMES IN EYES WITH PRIMARY EPIRETINAL MEMBRANES FOLLOWING SURGICAL REMOVAL. RESULTS AT 5 YEARS OF THE PAN AMERICAN COLLABORATIVE RETINA STUDY (PACORES) GROUP  
L. Wu, F.J. Rodriguez, M.H. Berrocal, J. Donate, M. Zas, J. Figueira, S. Rojas, V. Morales-Canton, J. Antonio Roca, S. Hernandez-Da Mota, S.M. Rosenstiehl-Colón, L.A. Daza-Irreño

# Preliminary Scientific Programme

---

- 53 WHAT DETERMINES VISION-RELATED QUALITY OF LIFE IN VITREOMACULAR INTERFACE DISORDERS: VISUAL ACUITY OR METAMORPHOPSIA?  
D. Yorston, A. Moroder, L. Jawaheer, G. McGowan
- 54 SPONTANEOUS PEELING OF THE INTERNAL LIMITING MEMBRANE DURING EPIRETINAL MEMBRANE SURGERY: LESSONS FROM THE PEELING CLINICAL TRIAL  
Y. Eude, A. Poinas, C. Volteau, O. Lebreton, A. Bonissent, P. Fossum, C. Creuzot-Garcher, Y. Le Mer, J. Perol, J. Fortin, A. Jobert, F. Billaud, C. Ivan, M. Weber, J.B. Ducloyer for the CFSR Research Net
- 55 OCT CHARACTERISTICS AND MORPHOLOGIC DESCRIPTION OF IMMATURE EPIRETINAL MEMBRANE  
M.S. Zinkernagel, L. Agliati, N. Sagurski, L. Ferro Desideri, R. Anguita
- 56 MACULA-THREATENING ILM DEFECT IN EPIRETINAL MEMBRANE  
M. Kamei, Y. Ishida, N. Ohta, K. Tsuboi
- 57 CLINICOPATHOLOGIC CORRELATION ANALYSIS OF IDIOPATHIC AND SECONDARY EPIRETINAL MEMBRANE SPECIMENS  
W.E. Smiddy, A. Shadmani, A. Zhu, P. Iyer, H. Takahashi, A. Elhusseiny, Y. Sayegh, S. Dubovy, H.W. Flynn
- 10:15-11:05  
**AWARD SESSION**  
**HERMANN WACKER LECTURE: KAZUAKI KADONOSONO**  
**JULES GONIN LECTURE: DEMETRIOS VAVVAS**
- 11:05-11:30  
**BREAK**
- 11:30-13:00  
**SESSION VII**  
**INNOVATION/TADAYONI SESSION**
- 58 DEEP LEARNING MODEL TO PREDICT PROGRESSION OF DIABETIC RETINOPATHY  
T.Y. Wong, J. Hong, Z. Wang, Y. Qin, Z. Guan, D. Zeng, Z. Xia, Y. Zou, H. Yu, A. Ren, X. Wang, Y. Chen, T. Chen, Z. Liang, H. Li, B. Sheng
- 59 AUTOMATED IDENTIFICATION OF THE FOVEAL CENTER POINT IN EYES WITH MACULAR DISEASES  
G.J. Jaffe, Z.Z. Zemborain, D.S. Grewal, Y.T. Huang, S. Farsiu
- 60 INJECTION-FREE ULTRA WIDEFIELD FLUORESCENCE ANGIOGRAPHY  
C. Munn, L. Kamintsky, Y. Serlin, M. Hadziahmetovic, M. Popovich, R.H. Muni, J. Levy, O. Tomkins-Netzer, A. Friedman, A.F. Cruess
- 61 OCT ANGIOGRAPHY WITHOUT THE HARDWARE: USING GENERATIVE AI TO TRANSLATE STRUCTURAL OCT INTO OCTA  
T. Leng, R.H. Badhon, M.N. Alam
- 62 OCT-F: AI-POWERED RETINAL FUNCTION BY STRUCTURAL OCT IMAGING IN GEOGRAPHIC ATROPHY DUE TO AMD  
F.G. Holz, D. Kar, S. Kim, S. Poor, A. Jones, R. Schwartz, A. Vilupuru, C.R. Baumal, E. Foos, M. Pfau, P. Chang, S. Schmitz-Valckenberg
- 63 SUSTAINED-RELEASE BIODEGRADABLE MICRONEEDLE ARRAYS FOR SUPRACHOROIDAL DRUG DELIVERY  
J.J. Kang-Mieler, A. Muliawan, Y. Jo, W.F. Mieler
- 64 DEVELOPMENT OF A MINIMALLY INVASIVE SUBRETINAL ACCESS APPROACH FOR TRANS-SCLERAL CELL AND GENE THERAPY DELIVERY WITHOUT VITRECTOMY  
M.S. Singh, S. Guo, C.B. Toomey, M.M. McNally, S. Harris-Bookman, K. Li, D. Agakishiev, S. Wei, S. Lee, K. Perrino, K.C. Wolfe, J.U. Kang
- 65 FROM OPTICAL MODELLING TO FIRST-IN-HUMAN ADD-ON IMPLANTATION OF THE SING IMT™: TRANSLATIONAL FEASIBILITY OF DUAL-LENS INTRAOCULAR SYSTEMS FOR LATE-STAGE AGE-RELATED  
S. Rizzo, G. Francione, P. Sasso, M. Romano
- 66 YAG LASER ABLATION OF VFO: FIRST RESULTS OF A TWO-YEAR PROSPECTIVE TWO-CENTRE CLINICAL TRIAL WITH INTRA-LASER VIDEOS  
P.E. Stanga, J. Sebag, U.I. Reinstein, S.E.F. Stanga, C. Koutsidis, J.H. Nguyen, J. Mamou, A.A. Sadun, J. Ketterling, R. Silverman, D. Reinstein
- 67 A METHOTREXATE-LOADED POLYCAPROLACTONE BASED DRUG CARRIER TO CONTINUOUSLY ATTENUATE PROLIFERATIVE VITREORETINOPATHY IN-VITRO  
A. Wolf, A. Hillenmayer, C. Hinterhaus, M. Parlak, C. Wertheimer

# Preliminary Scientific Programme

---

68 LIQUID BIOPSY PROTEOMICS REVEALS UVEAL MELANOMA TUMOR MICROENVIRONMENT MOLECULES TO GUIDE RATIONAL THERAPIES  
P. Mruthyunjaya, J. Wolf, S.H. Lee, G. Velez, A. Dufour, A. Bassuk, V.B. Mahajan

13:00-13:45

## LUNCH

13:45-15:10

## SESSION VIII

### PEDIATRIC RETINA AND DYSTROPHIES

69 RATES, TIMING, AND PREDICTORS OF EARLY AND LATE RETREATMENT ACROSS RISK-COHORTS IN RETINOPATHY OF PREMATURITY: INTRAVITREAL BEVACIZUMAB INJECTION VS LASER  
N.A. Patel, F. Altamirano, M. Yuan, C. Chaaya, S. Hoyek, J.H. Jeon, H. De Bruyn, R. Alahmadi, A. Fulton, I.S. Mantagos, C. Wu, A.M. Berrocal, E. Gonzalez, D.K. VanderVeen, R. Gise

70 UNDERLYING DISEASE IN ATYPICAL RETINOPATHY OF PREMATURITY  
N.F.S. da Cruz, J.L. Hudson, J.D. Sengillo, S.M. Shah, F. Lopez-Font, C.I. Negron, M.E. Farah, A.M. Berrocal

71 ASYMMETRIC PERIPHERAL RETINAL VASCULAR EXTENSION IN BEVACIZUMAB-TREATED TYPE 1 ROP: DISPARITY BETWEEN NASAL AND TEMPORAL HEMISPHERES  
M.E. Hartnett, N. Shah, M. Chandler, L. Sauer

72 INTERIM RESULTS FROM A MULTICENTER OBSERVATIONAL SAFETY STUDY OF PATIENTS TREATED WITH VORETIGENE NEPARVOVEC IN THE UNITED STATES  
A. Nagiel, S.R. Russell, B.L. Lam, J.I. Comander, T.S. Aleman, C.G. Besirli, R.A. Sisk, P. Yang, C.Y. Weng, D. Chung, A. Thakre, J.M. Savola, D.L. Rousso, and the PASS Study Group

73 SUBRETINAL GENE THERAPY LARU-ZOVA FOR X-LINKED RETINITIS PIGMENTOSA (XLRP): 9+ MONTH SAFETY, EFFICACY AND SURGICAL TECHNIQUE OF THE PHASE 2 DAWN TRIAL  
KISS Szilárd

74 SUBRETINAL INJECTION VOLUME MODULATES PERSISTENT OUTER RETINAL THINNING FOLLOWING GENE THERAPY FOR CNGA3-MEDIATED ACHROMATOPSIA  
I.P. Seitz, K.U. Bartz-Schmidt, M.D. Fischer

75 FROM MUTATION TO OUTCOME: A GENOTYPE-PHENOTYPE STUDY IN STICKLER SYNDROME  
A.M. Berrocal, J. Sosa-Lockward, D. Borden, C.I. Negron, D. Malek, C. Zhang

76 TEMPORAL RETINAL VESSEL ANGLE AS A BIOMARKER FOR FAMILIAL EXUDATIVE VITREORETINOPATHY  
W.C. Wu

77 A RECOMBINANT NORRIN-DERIVED GROWTH FACTOR RETAINS THE COMPLETE MULTIFUNCTIONALITY OF HUMAN NORRIN  
K. Dreiser, M. Blumenkrantz

78 EPIDEMIOLOGY OF MYOPIA IN FRANCE FROM 2022 TO 2024. THE EFISAFE STUDY  
C. Creuzot-Garcher, C. Conese, A.S. Mariet, E. Benzenine, I.B. Ghezala, P.H. Gabrielle, L. Arnould, C. Quantin

15:10-16:10

## SESSION IX

### POSTER SESSION

#### Vitreo-Retinal Surgery

P20 USE OF A BLUE FILTER TO IMPROVE VISUALISATION DURING PEELING OF ILM IN MACULAR SURGERY  
A. Alezzandrini

P21 RETINAL BREAKS IN PATIENTS WITH HEMORRHAGIC PVDS  
H. Getahun, K. Tamirisa, K. Kato, H. Rossmiller, W.X. Wang, R.S. Apte

P22 COMPARISON OF INVERTED VERSUS NON-INVERTED ILM FLAP TECHNIQUES IN MACULAR HOLE REPAIR  
C.C. Lai, E.Y.C. Kang, H.D. Chou, K.J. Chen, Y.H. Hwang, W.C. Wu

P23 VITRECTOMY AND INTRAOCULAR APPLICATION OF MITOMYCIN C FOR THE PREVENTION OF PROLIFERATIVE VITREORETINOPATHY IN HIGH-RISK RETINAL DETACHMENTS  
A. Assi, A. Mansour

# Preliminary Scientific Programme

---

- P24 CLINICAL OUTCOMES OF PSEUDOPHAKIC PATIENTS UNDERGOING IDIOPATHIC EPIRETINAL MEMBRANE PEEL FROM A LARGE MULTICENTER DATABASE  
V. Chau, E. Wismar, A. Capone Jr.
- P25 EPIRETINAL MEMBRANE FOVEOSCHISIS AND LAMELLAR MACULAR HOLES – SHOULD WE OPERATE?  
S. Crafoord, J.O. Carlsson
- P26 FACTORS AFFECTING SURGICAL OUTCOMES OF 23G-VITRECTOMY FOR FULL THICKNESS MACULAR HOLES  
A. Ebnetter, L. Timocanu, S. Tschuppert, C. Lang, J. Guber, C. Valmaggia
- P27 PROGNOSTIC FACTORS FOR DEVELOPMENT OF GLIOSIS AFTER INTERNAL LIMITED MEMBRANE FLAP FOR IDIOPATHIC MACULAR HOLES  
R. Ehrlich, E. Barayev, M. Krubiner, T. Leshchinski, A. Tiosano, O. Gal-Or, J. Nawrocki, Z.A. Nawrocka
- P28 PITFALLS IN SCLERAL BUCKLING WITH AN ENCIRCLING SILICONE BAND  
A.W. Eller, B. Rosin, J.K. Chhablani
- P29 PERFLUOROCARBON LIQUID USE IN PRIMARY RHEGMATOGENOUS RETINAL DETACHMENT: ASSOCIATION WITH TEAR LOCALIZATION, MACULAR STATUS, AND SINGLE-SURGERY ANATOMICAL SUCCESS  
C. Framme, S. Baumgärtel, M. Binter, A. Allo, J. Tode, M. Lindziute
- P30 PROGNOSTIC FACTORS IN PATIENTS WITH SUBMACULAR HEMORRHAGE COMPLICATING AGE-RELATED MACULAR DEGENERATION: A POST HOC ANALYSIS OF THE STAR STUDY  
P.H. Gabrielle, P. Eid, L.S. Aho, L. Kodjikian, E. Souied, J. Uzzan, J.B. Conart, M.N. Delyfer, C. Creuzot Garcher
- P31 LONG TERM OUTCOMES AFTER IMPLANTATION OF SUTURELESS INTRASCLERAL FIXATION LENSES – A SINGLE CENTER RETROSPECTIVE STUDY  
V. Govindaraju, A. Zhang, N. Jones, S. Aqil, C. Connelly, M. Trese, A. Weiner, J. Wolfe, L. Faia, S. Randhawa, G. Williams, T. Hassan
- P32 FIRST IN HUMAN TRIAL OF THE RETINAL THERMOFUSION PROCESS FOR RETINAL DETACHMENT REPAIR WITHOUT TAMPONADE-PROGRESS TO DATE  
W.J. Heriot, B. Bui, A. Metha, A. Hoang, Center for Eye Research Australia and University of Melbourne
- P33 A NOVEL MODIFIED FLAPLESS SURGICAL TECHNIQUE FOR SUTURELESS SCLERAL FIXATION OF FIL SSF INTRAOCULAR LENS: A PROSPECTIVE STUDY  
D. Iannetta, M.D de Smet, M.C. Saturno, A. Lambiase
- P34 EVALUATING THE SAFETY AND PERFORMANCE OF THE HYALURONIC ACID-BASED HYDROGEL HEALAFLOW AS A VITREOUS SUBSTITUTE IN VITRO AND IN PATIENTS WITH PHTHISIS BULBI  
K. Januschowski, A. Thonet, V. Junge, A. Schulz
- P35 UNSUCCESSFUL PRIMARY RETINAL REATTACHMENT AFTER VITRECTOMY FOR INFERIOR RHEGMATOGENOUS RETINAL DETACHMENT: CLINICAL CHARACTERISTICS AND RISK FACTORS  
T. Koto, T. Torikai, M. Inoue, A. Hirakata
- P36 FOVEAL CHORIORETINAL SCAR REMODELING DUE TO OCULAR TOXOPLASMOSIS AFTER VITRECTOMY: A RETROSPECTIVE CASE SERIES  
E.B. Lavaque, G. Budmann, R. Spaide
- P37 SUBRETINAL FLUORESCEIN INJECTION FOR INTRAOPERATIVE IDENTIFICATION OF OCCULT RETINAL BREAKS IN RETINAL DETACHMENT SURGERY  
F. Matonti, J.J. Carvalho, A. Comet, C. Morel, J. Conrath, P. Gascon, F. Devin
- P38 MACULAR HOLE CLOSURE BY SUBRETINAL HYDRODISSECTION  
C.H. Meyer
- P39 CLINICAL OUTCOMES OF COMBINED PHACOVITRECTOMY IN VITREOMACULAR INTERFACE DISORDERS  
W.F. Mieler, T. Kritfuangfoo, E. Tu
- P40 A PILOT STUDY OF INTRAOPERATIVE MELPHALAN TO PREVENT RECURRENT PVR: THE IOMPVR STUDY  
C.A. Moreira-Neto, J.S. Pulido, L.B.M. Gonçalves, G.N. Cavalcanti, A.S. Lima, J.P.B. Neto, D. Lavinsky, T.V.F. de Oliveira, F.E. Ogata, L.Z. Ribeiro, L.F. Teixeira, F.B.G. do Nascimento, L.H. Lima, O.J. Magalhães, M. Eid-Farah, M. Maia
- P41 TREATING MACULAR HOLES WITH DEHYDRATED AMNIOTIC MEMBRANE SPECIFICALLY DESIGNED FOR RETINAL USE  
S. Natarajan, C.P. Pac, A. Singh, D. Pelayes

# Preliminary Scientific Programme

---

- P42 SURGICAL REPAIR AND SUCCESS RATES FOLLOWING PRIMARY RETINAL DETACHMENT SURGERY IN NORTHERN SWEDEN  
E.M. Olofsson
- P43 OCT BIOMARKERS IN TRAUMATIC MACULAR HOLE PROGNOSIS AND TREATMENT (MODIFIED PACKING TECHNIQUE)  
D. Pelayes, J.H. González Cortés, J.E. González Cantú, S. Natarajan, J.A. Garza Chavarría
- P44 EVALUATING CHATGPT'S ACCURACY IN RECOMMENDING SURGICAL INTERVENTION FOR EPIRETINAL MEMBRANE: A COMPARISON WITH EXPERT OPHTHALMOLOGISTS  
R. Saadi, A. Wattad, M. Goldstein, A. Loewenstein
- P45 USE OF TENON'S CAPSULE AUTOGRAFT IN VITREORETINAL SURGERY  
M. Saleh
- P46 THE SIGNIFICANCE OF BASELINE FOVEAL ECTOPIA IN PRIMARY IDIOPATHIC EPIRETINAL MEMBRANE  
M.T. Sandinha, C. Go, Y. Zheng, D.H. Steel
- P47 STRUCTURAL SD-OCT CHANGES FOLLOWING SUCCESSFUL REPAIR OF RETINAL DETACHMENT WITH RECURRENT PROLIFERATIVE VITREORETINOPATHY USING SILICONE OIL WITH OR WITHOUT INTRAVITREAL METHOTREXATE  
B.V. Stanzel, M. Ferrara, P. Peschke, A.T. Froehlich, C. Rudolf, K.T. Boden, A.K. Rickmann, M.R. Romano, P. Szurman
- P48 PREDICTORS OF ANATOMIC AND FUNCTIONAL SUCCESS WITH AMNIOTIC MEMBRANE GRAFTING FOR COMPLEX MACULAR HOLES  
S.D. Walter, P. Totten
- P49 PARS PLANA VITRECTOMY FOR NON-MYOPIC MACULAR SCHISIS  
A. Weinberger
- 80 PROSPECTIVE VALIDATION OF ITEMS SCORE: FOCUS ON STRUCTURAL CHANGES  
M.R. Romano, M. Ferrara, A. Rickmann, S. Pastor-Idoate, S. Rizzo, ITEMS Validation Study Group
- 81 GLAUCOMA MADE EASY (EASIER?) FOR A VITREORETINAL SURGEON  
Z.A. Nawrocka
- 82 PLIS FIX – PERSONALISED LIVERPOOL SCLERAL-FIXATED IOL CALCULATOR  
R. Raimondi, A. Abass, J. Davies, P. Chua, T. Sandinha
- 83 DYNAMIC SLO IS A USEFUL TOOL FOR MANAGEMENT OF SYMPTOMATIC VITREOUS OPACITIES  
E.H. Ryan, T. Chiang
- 84 OUTCOMES OF RELAXING RETINECTOMY IN PEDIATRIC RETINAL DETACHMENTS  
P.J. Ferrone, M. Bouaziz
- 85 MANAGEMENT OF OPTIC DISC PIT MACULOPATHY: LONG-TERM RESULTS OF VITRECTOMY WITH INTERNAL LIMITING MEMBRANE FLAP (OPTIMA STUDY REPORT 1)  
M. Ferrara, S. Vaccaro, B. Stanzel, R.J. Hillier, M. Figueroa, T. Caporossi, G. Pertile, M.R. Romano, S. Rizzo, D.H.W. Steel, OPTIMA Study Group
- 86 EARLY SUBRETINAL RTPA-ASSISTED VITRECTOMY FOR SUBMACULAR HEMORRHAGE SECONDARY TO PEHCR  
J. García-Arumí, G. López, C. Bohórquez, O. Subirà
- 87 SURGICAL TREATMENT OF RETINAL VASOPROLIFERATIVE TUMORS: A SINGLE CENTER 10 YEARS' EXPERIENCE  
R. Avci, A. Mavi Yildiz, E. Avci, M. Koroglu Canli, I. Onal Avci, Samuray Tuncer, A.O. Saatci, I. Tugal-Tutkun
- 88 FACTORS ASSOCIATED WITH POST-OPERATIVE VISUAL OUTCOMES AFTER INTRAOCULAR FOREIGN BODY INJURIES  
J.F. Arevalo, J. Andoh, O. Halawa

16:10-17:35

## SESSION X

### VITREO-RETINAL SURGERY

- 79 AN ARTIFICIAL INTELLIGENCE EVALUATION OF LINCOFF'S RULES FOR FINDING THE RETINAL TEAR  
J.T. Thompson, V. Li

19:15

## CONFERENCE DINNER

# Preliminary Scientific Programme

**Saturday, 30 May 2026**

08:00-09:25

## **SESSION XI**

### **DIABETIC RETINOPATHY AND VASCULAR DISEASES**

- 89 PHENOTYPING DIABETIC MACULAR EDEMA (DME): THE ITALIAN RETINA SOCIETY AI-ASSISTED OCT BIOMARKERS STUDY  
E. Midena for the Italian Retina Society 'AI in DME' Study Group
- 90 ASSESSING RETINAL NON-PERFUSION WITH ULTRA-WIDEFIELD OCT-A: CORRELATIONS WITH DIABETIC RETINOPATHY SEVERITY AND PERIPHERAL LESIONS  
Y.S. Zhang, S.S. Gumustop, X. Ding, I. Ploumi, Y. Zhu, L. Wang, F. Romano, I. Garg, C. Chen, K.N. Nodecker, S.H. Shah, S.L. Wagner, L.A. Kim, D.M. Wu, N.A. Patel, D.G. Vavvas, D. Husain, J.W. Miller, J.B. Miller
- 91 COMPARISON OF GEOMETRIC PERFUSION DEFICITS WITH STANDARD VESSEL DENSITY MEASURED ON OCTA AND ASSOCIATION WITH QUANTITATIVE CONTRAST SENSITIVITY IN DIABETIC EYE DISEASE  
J.B. Miller, J.X. Ong, X. Ding, M. Abidi, J. Gan, I. Ploumi, F. Vingopoulos, F. Romano, D. Husain, L.A. Kim, N.A. Patel, D.G. Vavvas
- 92 DIABETES REDUCES RETINAL NEURONAL CELL PROTEIN SYNTHESIS  
T.W. Gardner, M.K. Losiewicz, L. Elghazi, P.E. Fort, S.F. Abcouwer
- 93 RETINAL NEURODYSFUNCTION AND COGNITIVE IMPAIRMENT IN TYPE 2 DIABETES: RESULTS OF THE H2020 FUNDED RECOGNISED CROSS-SECTIONAL STUDY  
N. Lois, R. Simo, for the RECOGNISED Study Group
- 94 MACULAR PIGMENTS CHANGES IN DIABETIC EYES WITHOUT RETINOPATHY  
F. Bandello, A. Arrigo
- 95 TELANGIECTATIC CAPILLARIES IN RETINAL VEIN OCCLUSION: INCIDENCE, TOPOGRAPHY, AND RISK FACTORS  
C.M. Eandi, P. Forte, J. Cattaneo, V. Fontana, B. Dupas, G. Querques, M. Paques

- 96 DEMYSTIFYING CORTICOSTEROID-RELATED ADVERSE EVENTS AND DISEASE TRAJECTORY OUTCOMES: INSIGHTS FROM THE NEW DAY PHASE 4 CLINICAL TRIAL OF A FLUOCINOLONE ACETONIDE INTRAVITREAL IMPLANT FOR DME  
M.A. Singer, K. Alkhatib, R.A. Amarshi, S. Moody, M. Pao

- 97 TIESPECTUS (MK-8748) FOR THE TREATMENT OF MACULAR EDEMA SECONDARY TO BRANCH RETINAL VEIN OCCLUSION: PHASE 1/2A RIOJA CLINICAL STUDY  
B.D. Kuppermann

- 98 HUMAN IMMUNODEFICIENCY VIRUS (HIV) AND INCREASED RISK OF RETINAL ARTERIAL OCCLUSION  
R. Parikh, R. Kamran, J. Sridhar, K.M. Wai, P. Mruthyunjaya, E. Rahimy, S.T. Berkowitz

09:25-10:25

## **AWARD SESSION**

**YASUO TANO LECTURE: TOM WILLIAMSON**  
**MIKE TRESE AWARD: KIMBERLY DRENSER**  
**GRAGODAS AWARD: THIBAUD MATHIS**

10:25-11:25

## **SESSION XII**

### **POSTER SESSION**

#### **Diabetic Retinopathy And Vascular Diseases**

- P50 EFFECT OF PANRETINAL PHOTOCOAGULATION ON RETINAL OXYGEN METABOLISM AND OCULAR BLOOD FLOW IN DIABETIC RETINOPATHY  
A.M. Abu El-Asrar, W.K. Alsarhani, A.F. AlBloushi, A. Alzubaidi, P.W. Gikandi, E. Stefánsson
- P51 MACULAR PIGMENT OPTICAL DENSITY LOSS CORRELATES WITH THE PRESENCE OF THE DISORGANIZATION OF THE RETINAL INNER LAYERS IN DIABETIC RETINAL DISEASE  
T. Ach, A. Schumacher, S. Chang, A.S. Jauch, M. Kleekamp, L. Goerdts, M. Saßmannshausen, F.G. Holz, K. Wall
- P52 STAGE-SPECIFIC ASTROGLIAL REMODELING GOVERNS BLOOD-RETINAL BARRIER INTEGRITY AROUND MICROANEURYSMS IN DIABETES  
C. Balaratnasingam, D. An

# Preliminary Scientific Programme

---

P53 QUANTITATIVE ANALYSIS OF OCT ANGIOGRAPHY IN HEALTHY AND DIABETIC EYES WITH SHIFTING ACQUISITION SPEEDS  
P.M. Maloca, T. Zwinscher, N. Inglin, N. Feltgen, P. Valmaggia

P54 RHONE-X EXTENSION STUDY: CLINICAL IMPROVEMENTS IN EYES WITH DME SWITCHED FROM AFLIBERCEPT TO FARICIMAB  
J.A. Wells, C.S. Tan, R. Goldberg, I. Pearce, V.S. Sheth, A.M. Khanani, C. Jones, K. Gibson, D.A. Sim

## Experimental And Clinical Studies

P55 OPTIMIZING PRE-INJECTION SYRINGE HANDLING FOR AIR BUBBLE REMOVAL: FLYCKING VS SWINGING  
M. Farah, L. Zago, N. Crus, P. Fukuhara, M. Maia, G. Barreto

P56 SUBTYPES, RISK FACTORS, AND VISUAL TRAJECTORIES IN CENTRAL SEROUS CHORIORETINOPATHY: FINDINGS FROM A MULTICENTER REGISTRY  
C. Lange, on behalf of the Retina.net CSC-Registry-Study Group

P57 THE ERA OF LARGE LANGUAGE MODELS AND THE DECLINE OF READABILITY IN RETINA-FOCUSED RESEARCH ABSTRACTS  
J. Neubauer, K.U. Bartz-Schmidt, F. Gelissen

P58 SUBTHRESHOLD MICROPULSE LASER IN THE TREATMENT OF MACULAR EDEMA SECONDARY TO INHERITED RETINAL DYSTROPHIES  
M. Parravano, E. Costanzo, M.S. Polito, C. Dell'Aquila, M. D'Andrea, M. Varano, T. Rossi, V. Parisi, L. Ziccardi

P59 FAST-ONSET DRUSEN IN HUMAN RPE-RETINA CULTURE TO MIMICK AVASCULAR AGE-RELATED MACULAR DEGENERATION  
G. Thumann, M. Mohit, T. Bascuas, S. Almedawar, C. Müller, J. Prestle, X. Zhu, A. Duriez, M. Otanuly, A. Morgado, A. Follonier, A. Conti, M. Kropp

## Inflammation Endophthalmitis

P60 DEVELOPMENT, CALIBRATION AND VALIDATION OF A PERINATAL PROGNOSTIC CLINICAL CALCULATOR PREDICTING TYPE 1 ROP RISK  
R. Parrozzani, A. Carli, G. Midena, G. Baffoni, E. Midena

## Pediatric Retina And Dystrophies

P61 A HUMAN CO-CULTURE MODEL OF CHOROIDEREMIA IMPLICATES MMP2 AS A POTENTIAL LINK BETWEEN RAB PRENYLATION DEFECTS AND RPE-CHOROID ATROPHY  
A.T. Fahim, A.J. Karoukis, N. Dayanthi Perera, M. Raeker

P62 IN SILICO ANALYSIS OF MHC-I-ASSOCIATED AUTOIMMUNE RESPONSES RELATED TO CHORIORETINAL ATROPHY FOLLOWING RPE65 GENE THERAPY  
I. Kutlutürk Karagöz, M. Kaya, J. Pulido, M. Munk

P63 MULTI-COUNTRY VALIDATION OF TROP-SEVERITY SCORE: IMPROVED OUTCOMES AND DECREASED INTERVENTION RATES  
D.M. Moshfeghi, S.V. Shah, A.R. Brant, C. Zhao, I. Braimah, A. Ahmed, S. Shereif, G.C. Tabin

P64 FIRST-IN-ROP EXPERIENCE WITH FARICIMAB: PROSPECTIVE PILOT EVIDENCE OF EFFICACY AND DURABILITY  
P. Zhao

## Retinal Imaging

P65 NEW ALGORITHMS IN DIGITAL MEDICINE TO EVALUATE CLINICAL BIOMARKERS IN EARLY/ INTERMEDIATE AMD PROGRESSION  
C. Azzolini, S. Donati, A. Orro, C. Metrangolo, A. Falco, F. Oggioni

P66 ELEVATED RNV ON WIDEFIELD OCTA PREDICTS COMPLICATIONS IN HIGH-RISK PDR  
Y. Jia, A.L. Wu, C.J. Flaxel, T.S. Hwang

P67 EARLY ADOPTION OF AUTONOMOUS ARTIFICIAL INTELLIGENCE FOR DIABETIC RETINOPATHY SCREENING AMONG MEDICARE BENEFICIARIES  
A.A. Moshfeghi, S.B. Engelhard

P68 EYES ON CANCER: AN OCT/OCTA- AND AI-BASED FRAMEWORK TO IDENTIFY RETINAL BIOMARKERS IN ADVANCED TUMORS  
S. Arabi, M. Apata, U. Schmidt-Erfurth

P69 SEQUENTIAL BILATERAL INVOLVEMENT IN ACUTE DIFFUSE OCCULT INNER RETINOPATHY (ADOIR): A CASE SERIES  
K. Shinoda, Y. Miyake, Y. Igawa, M. Inoue

# Preliminary Scientific Programme

---

P70 MULTIMODAL, MULTI-DISEASE MEDICAL IMAGING FOUNDATION MODEL (MERMED-FM)

D.S.W. Ting, Y. Zhou, C.W.N. Quek, J. Zhou, L. Gutierrez, R.S.M. Goh, Y. Liu

## Tumors

P71 VITRECTOMY WITH OR WITHOUT ENDORESECTION FOR RETINAL CAPILLARY HEMANGIOBLASTOMA: A SYSTEMATIC REVIEW

H.D. Chou, Y.C. Chen, V. Raval, R. Hussain, R. Anguita, H. Heimann, J.F. Kiilgaard

P72 EARLY GENETIC EVOLUTION OF DRIVER MUTATIONS IN UVEAL MELANOMA

Z.M. Correa, J.J. Dollar, J.W. Harbour, on behalf of the Collaborative Ocular Oncology Group

P73 IMMUNE LANDSCAPE OF UVEAL MELANOMA

A.M. Jousseaume, A. Peuker, L. zur Bensen, S. Haas, S. Ochsenreither, U. Keller, Decode-UM Consortium

P74 EFFECT OF CYTOPATHOLOGY CONFIRMATION ON THE PROGNOSTIC ACCURACY OF GEP/PRAME IN UVEAL MELANOMA IN THE COLLABORATIVE OCULAR ONCOLOGY GROUP 2 (COOG2) STUDY

I.K. Kim, A.M. Lane, T.A. Aaberg Jr, Z.M. Correa, B.P. Marr, P. Mruthyunjaya, D.A. Reichstein, A.C. Scheffler, A.H. Skalet, J.W. Harbour on behalf of the COOG2 Investigators

P75 DIFFUSE FUNDUS HYPOPIGMENTATION ASSOCIATED WITH IMMUNOTHERAPY FOR METASTATIC MELANOMA - AN UNDERRECOGNISED CONDITION?

J. Krohn

P76 PREDICTING THE THERAPEUTIC EFFECT OF PHOTODYNAMIC THERAPY ON CIRCUMSCRIBED CHOROIDAL HAEMANGIOMA

J. Jeon, C.S. Lee

100 USE OF INTRAVITREAL POVIDONE-IODINE MONOTHERAPY AS A THERAPEUTIC ALTERNATIVE FOR ACUTE ENDOPHTHALMITIS IN PATIENTS WITH ANTIBIOTIC ALLERGIES

M.H. Berrocal, L. Acaba-Berrocal, A. Perez-Negron

101 SAFETY AND EFFICACY OF RITUXIMAB IN REFRACTORY NONINFECTIOUS UVEITIS AND SCLERITIS

M.A. Abouammoh, F.M. Al Ghulaiga, I. Alharbi, A.F. Albloushi, A.M. Dheyab, A.M. Abu El-Asrar

102 VAMIKIBART, A FIRST-IN-CLASS INTRAVITREAL IL-6 INHIBITOR FOR UVEITIC MACULAR EDEMA: RESULTS FROM PHASE 3 PIVOTAL STUDIES

M. Mesquida, S. Fauser

103 CHOROIDAL VAASCULITIS AS A BIOMARKER OF INFLAMMATION OF THE CHOROID WITH ICGA SPEARHEADING FOR DIAGNOSIS, CLASSIFICATION AND FOLLOW-UP

C.P. Herbort Jr, I. Pappasavas

104 OUTCOMES AFTER PARS PLANA VITRECTOMY FOR RETINAL DISEASES ASSOCIATED WITH TOXOPLASMOSIS

L.H. Lima, J.H.C. Tavares, M.P. Arruda, J. Oliveira, T.F. Oliveira, G. Coelho, A. Rosa, C.E. de Souza, C.R. Garcia, T.E.F. e Arantes, G. Heringer, L. Peixoto, C. Muccioli, R. Belfort Jr

105 EPIDEMIOLOGY OF EPIRETINAL MEMBRANE AND MACULAR EDEMA IN A LARGE COHORT OF PATIENTS WITH UVEITIS

Y. Usui, K. Tsubota, C. Maehara, R. Sugawara, M. Asakage

106 SURGICAL MANAGEMENT OF UVEAL EFFUSION SYNDROME - OUTCOMES OF EARLY AND DELAYED SCLERAL WINDOWS

D.S. Grewal, V.M. Kasetty, E.H. Jung, S. Massenzio, J.D. Deaner, B. Smith, M.H. Ali, A.S. Thomas, J.C. Tsui, P. Mruthyunjaya, X. Chen, G.J. Jaffe

12:30

**ADJOURN, END OF MEETING**

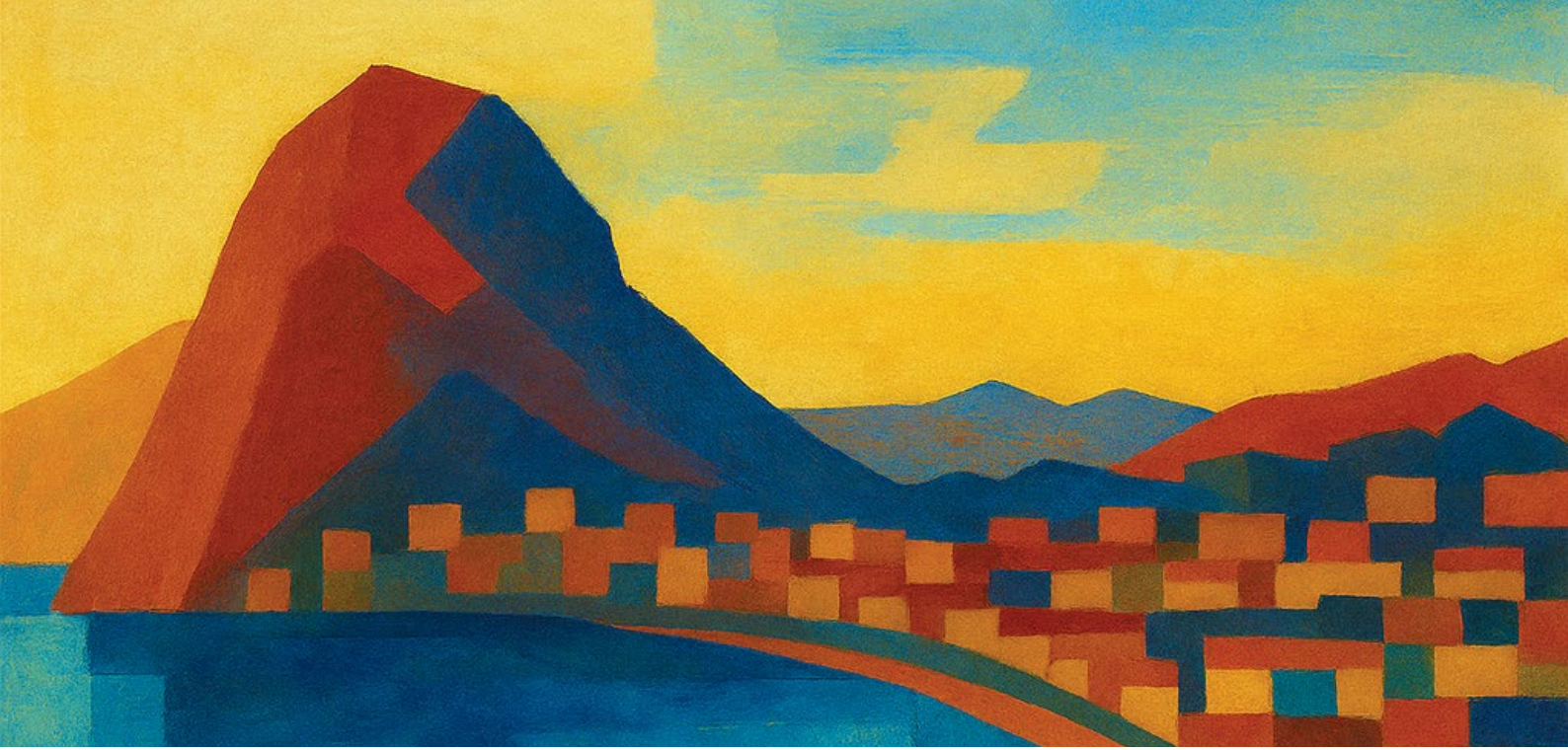
11:25-12:30

## SESSION XIII

### INFLAMMATION ENDOPHTHALMITIS

99 IMPACT OF CEFUROXIME PROPHYLAXIS ON THE BACTERIAL SPECTRUM OF POSTCATARACT SURGERY ENDOPHTHALMITIS

C. Chiquet, A. Baudere, C. Dot, B. Matagrín, M. Gallice, K. Palombi, M. Maurin



## Contact information

[www.cjg2026.com](http://www.cjg2026.com)

For any enquiry regarding membership, programme and abstracts:

Club Jules Gonin  
15 avenue de France 1004 Lausanne, Switzerland  
[info@clubjulesgonin.com](mailto:info@clubjulesgonin.com)

For any enquiry regarding organisation, registration and accommodation:

Congrex Switzerland Ltd.  
Reinacherstrasse 131  
4053 Basel / Switzerland  
T +41 61 686 77 64  
E [secretariat.ClubJulesGonin@congrex.com](mailto:secretariat.ClubJulesGonin@congrex.com)

---